

# Astro-Physics Keypad Battery Identification

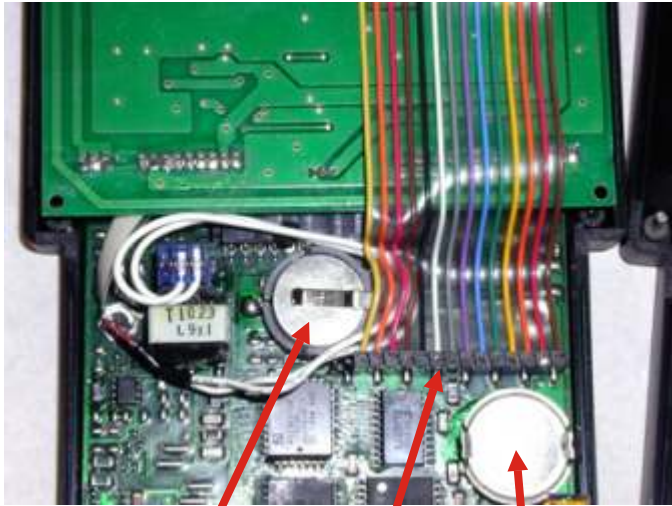


Please be sure that you order the correct battery for your keypad! To determine which battery you need, carefully unscrew the six screws on the back of the unit. Do not remove the screws completely. When pulling the case apart, be careful of the cable, and be careful not to lose the nylon spacer washers that are on each screw!

Nylon Spacer



**Older Style Keypad** - Serial numbers up to the 1400's (except some repaired units)



Renata CR1632 Battery  
(Our part # **E0310**)

Real Time Clock

Display Ribbon Cable Plug

**Some keypads with serial numbers in the 1400 - 1568 range and older keypads that have had major repair done.**

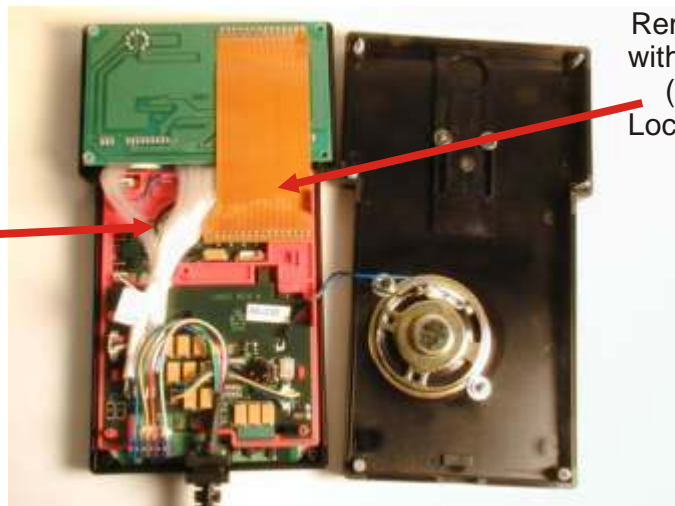


Real Time Clock

Renata CR2430 Battery with 6" soldered pigtail  
(Our part # **E0338**)

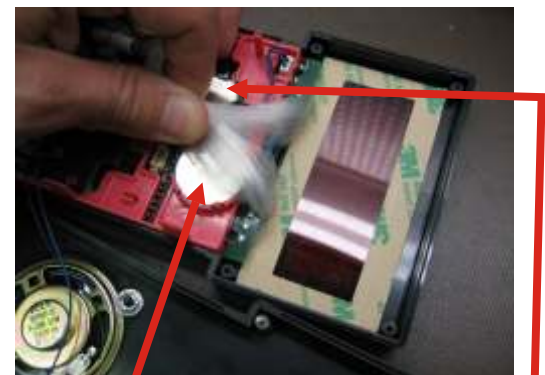
**Current Style Keypads** - all units after Serial number 1568 and some earlier units.

Renata CR2430 Battery with 2.5" soldered pigtail  
(Our part # **E0334**)  
Located UNDER orange ribbon cable



Real Time Clock - Located under fiber optic bundle

Current Style with Display Removed



Battery

Real Time Clock